



Peace Highway: Niš - Merdare - Pristina

Sustainable transport
 Flagship 1 · Connecting East to West

The European Commission supports the Western Balkans in bringing the region's core transport network up to EU standards.

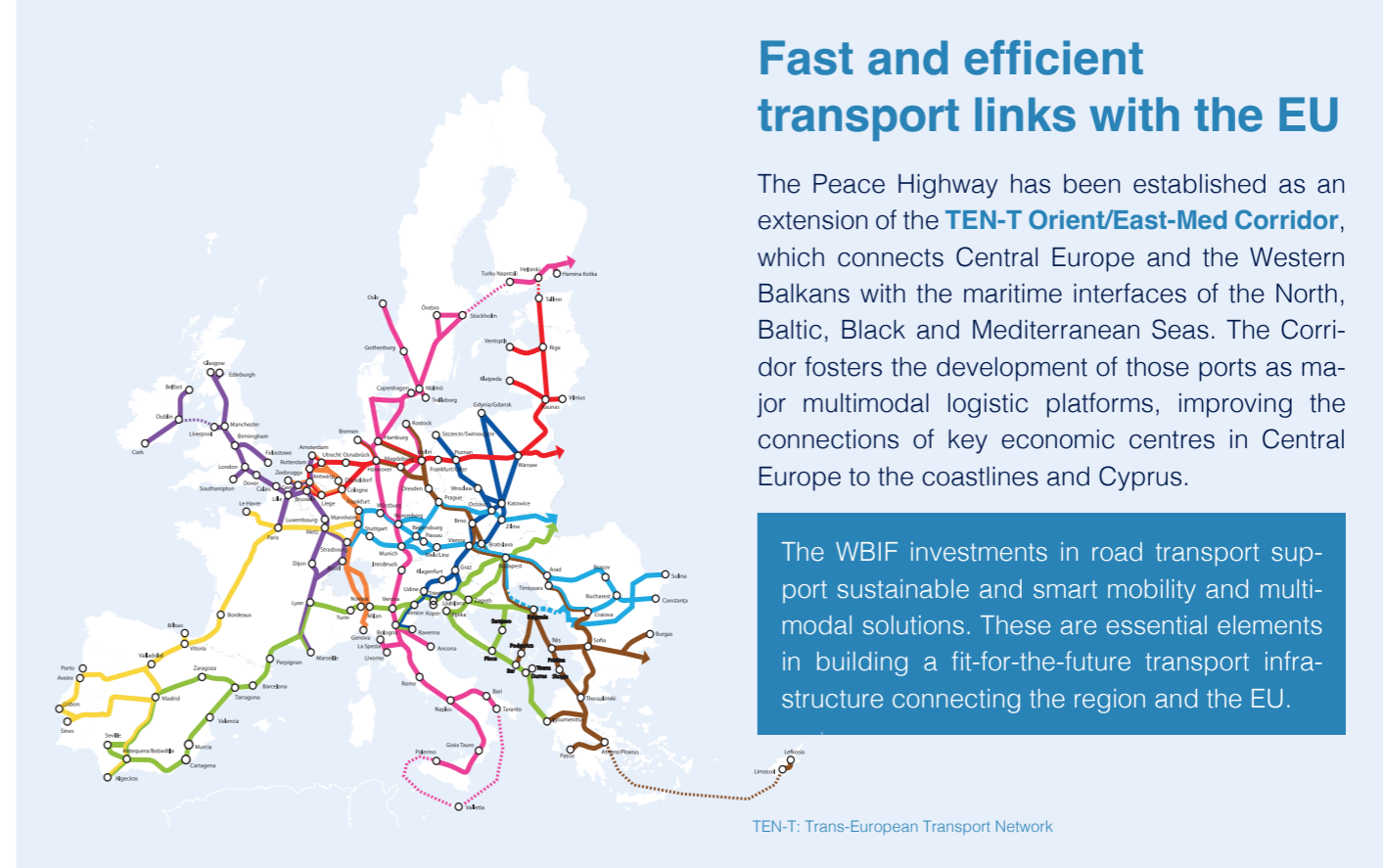
The 'Peace Highway' is a flagship investment of the Economic and Investment Plan and will create a fast and efficient transport link between Niš and Pristina. Strategically interconnected with core transport corridors, the highway is part of the shortest route between the Port of Durrës on the Adriatic and South-Eastern and Central Europe.



JASPERS (Joint Assistance to Support Projects in European Regions) and CONNECTA (Technical Assistance to Connectivity in the Western Balkans) have also provided technical advice for project preparation.

€947m estimated total investment	€739m Serbia
	€208m Kosovo
€140.4m EU grants approved	€56.2m Serbia
	€84.2m Kosovo
103.4 km total length	76.4 km Serbia
	27 km Kosovo
Co-financiers:	

July 2023



Fast and efficient transport links with the EU

The Peace Highway has been established as an extension of the **TEN-T Orient/East-Med Corridor**, which connects Central Europe and the Western Balkans with the maritime interfaces of the North, Baltic, Black and Mediterranean Seas. The Corridor fosters the development of those ports as major multimodal logistic platforms, improving the connections of key economic centres in Central Europe to the coastlines and Cyprus.

The WBIF investments in road transport support sustainable and smart mobility and multimodal solutions. These are essential elements in building a fit-for-the-future transport infrastructure connecting the region and the EU.

Results and benefits

 103.4 km of road upgraded to highway standards	 Increase in travel speed from 20-60 km/h to 100-120 km/h	 Enhanced level of service and traffic safety, reduction of transportation costs	 Improved resilience of the highway to climate change through adaptation measures
 Modern and efficient administrative crossing point in Merdare	 18,900 new jobs during construction and operation periods	 Promotion of inclusive procurement practices through apprenticeship and on-the-job training for young people during construction	 Support economic development, regional integration and political stability

Peace Highway sections



- Serbia**
- Niš (Merošina) – Pločnik (Beloljin)**
 Length: 32.7 km
 Status per subsection:
 - Merošina – Merošina 1: Completed
 - Merošina 1 – Prokuplje East: Works procurement and urban design preparation
 - Prokuplje East – Prokuplje West: Detailed design
 - Prokuplje West – Beloljin: Detailed design
 - Pločnik (Beloljin) – Merdare**
 Length: 43.7 km
 Status: Preliminary design approval
- Kosovo**
- Merdare - Pristina**
 Length: 27 km
 Status: Technical due diligence

* This designation is without prejudice to positions on status, and is in line with UNSCR 1244/1999 and the ICJ Opinion on the Kosovo declaration of independence.